

INQUE Group

rio  
RELIABILITY FIRST

# RESIDENTIAL LOCK <sup>2025</sup>

EDITION - 01







INQUE GROUP is an Indian conglomerate headquartered in Mumbai with its established, experienced and esteemed roots founded by a family that created the ENOX brand which has been a market leader.

In the year 2014, A Swedish multinational company named ASSA ABLOY acquired ENOX, a branch of business that deals in locks and hardware. At that time. We were the market leader employing 220 passionate employees in our team.

Since the Kitchen Hardware business was not acquired from our product portfolio, we decided to continue our Kitchen Hardware under the INQUE brand. Since then, INQUE was born as a modular kitchen solutions provider.

Headed by the best in the industry, Mr Divyesh Shah & Ms. Rupa Shah, INQUE Group is under the company Red Plus Interiors India Private Limited. INQUE Group is a home improvement company, providing multiple solutions with these indigenous brands under its umbrella - AVEO Linea glass and sliding solutions, INQUE Modular kitchens & wardrobes, REDPLUS Demountable Partitions, IDENICO acoustic solutions and RIOO Digital Door Locks.

Our HQ & Experience Center is Located in Andheri Mumbai. With 3 manufacturing units & warehouses spanning across 1,50,000sq.feet & a passionate team-based Pan- India, INQUE Group excels in providing top notch quality solutions and services anywhere in India.

## INQUE Group



Security is your concern; and ours is specialty. At RIOO, we believe your assets deserve better security that's easy to set up and use, and requires minimal attention and care while providing security and ease which cannot be compromised.

Established in 2015 as a Digital Door Lock brand, RIOO now has complete door hardware solutions along with home automation under its umbrella of products & services. A professional security smart solution provider, RIOO was born in Mumbai, India with its wings spread all across the country. With its distinct features in the digital lock systems, we have superior quality Digital Locks with 5-in-one features.

Our Keyless Solutions bring you the convenience to unlock your main door lock with Fingerprint, RFID Card, Mechanical Key, PIN Code or Mobile APP. Our Digital And Mechanical Security Locks (Mortise, Deadbolt, Rim, Cabinet) are continually pushing the limits of home security which works easily with doors.

Our locks are safe, strong and secure and have been tested to withstand adverse conditions. Not only are they technologically advanced but also have a high style quotient. With its sleek and contemporary design, they can aesthetically elevate your spaces. Customised designs are available for commercial, multi-family and mixed-use applications. RIOO products offer quality and value together while continuing the tradition of excellence every day. Today, countless people trust us and we believe it's just the beginning.

### VISION

To upgrade the community by evolving from the traditional mechanical locks to digital and affordable Door Lock Solutions.

### MISSION

To present an excellent digital & mechanical door solution hardware range with latest technologies and commendable service to our valued customers globally.



Mrs. BHAVNA SHAH  
CHAIRPERSON



Mr. DIVYESH SHAH  
MANAGING DIRECTOR



Mrs. RUPA SHAH  
CEO





## Fingerprint

Secure Fingerprint access means you will never have to worry about forgetting your passwords or lost keys. It is the most convenient way to get in with precise and rapid one-touch direct fingerprint identification.



## Pin Code

The fashionable and advanced touch keypad technology is used. Lock not only supports the opening with various pin codes but also you can set time bound or one-time usage guest codes as well.



## RFID Card

Unlock your door with a key tag or key card with a simple tap. Sleek & Smart secure access card eases your entry to your home with just a swipe of the card



## Manual Key

For the more traditional users or emergency access, lock comes with a set of mechanical keys, which are unique and secured.



## Multiple Level Access Control

Diferent access levels across administrator, normal & guest not only determines their access type but rights as well to add, view or edit settings or users. This maintains control in the right hands



## Double Authentication Mode

Using this mode, two-access authentication is required, which makes getting access through your security door much safer and highly secured. It can be combination of two fingerprint access, fingerprint & pin or a fingerprint & RFID card.



## Voice Guidance

Display screen and systematic voice guidance smoothly guides you through various option & settings making it conveniently easy to use and operate.



## Child Safety Lock

For the safety of the occupants, the child safety locking feature can be engaged and the lever handle will not operate. Thus preventing any child to open the lock.



## Emergency Power Supply

Battery exhausted- no issues. Simply power up your lock with portable power source to open the lock with your preferred access type.



## Alarm Indicator

If someone tries to open or break the door with force or enter an incorrect access input more than 3 times consecutively, the door lock sounds a warning and disables authentication for 3 minutes to help prevent trespassing.



## Random Secure Code

Scrambling password to prevent the password from being peeped upon by strangers/visitors at any point upon input. You can add codes before and after your original pincodes to make it more secure and privacy.



## Auto / Manual Locking Mode

Set the lock in auto closing or manual closing mode. When the door is closed the lock bolts engage automatically in auto mode and in manual mode the locking bolts can be engaged by turning the lever handle.



## Privacy Mode

The internal knob can be used for extra bolt to engage thus preventing anybody with access to open the lock from outside. Only the internal occupant can open the door from inside.



## Multiple Level Access Control

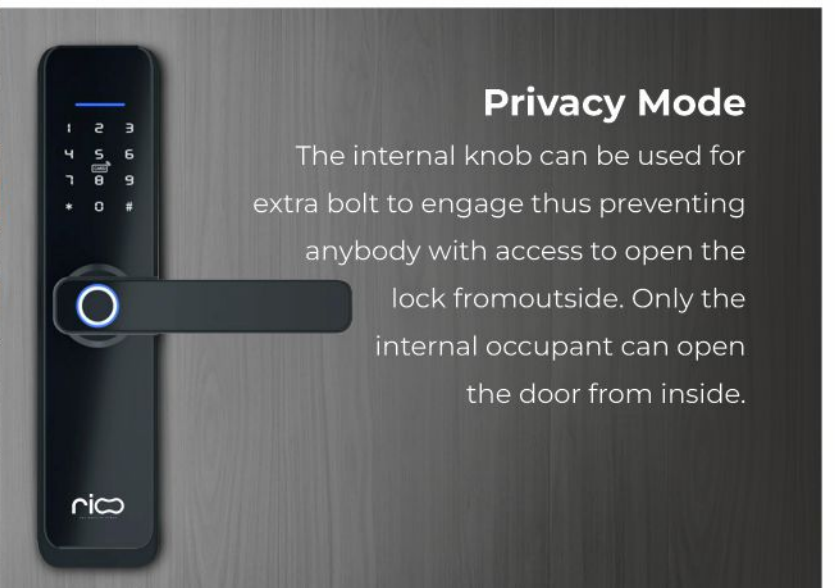
Diferent access levels across administrator, normal & guest not only determines their access type but rights as well to add, view or edit settings or users.

This maintains control in the right hands



## Voice Guidance

Display screen and systematic voice guidance smoothly guides you through various option & settings making it conveniently easy to use and operate.



## Privacy Mode

The internal knob can be used for extra bolt to engage thus preventing anybody with access to open the lock from outside. Only the internal occupant can open the door from inside.





- Product Size : 440mm X 77mm
- Color : Black
- Password Registration feature (up to 150 users)
- Fingerprint Registration feature (up to 100 users)
- Smart card Registration feature (up to 150 users)
- Face Registration feature (up to 50 users)
- In-built Video Door Bell
- Mobile APP
- Password-hide feature
- OTP Feature
- Emergency Mechanical Key
- USB Emergency Power Supply
- 45mm to 60mm Thick Wooden Door
- Battery Capacity : 4200mAh

**RDML-777 FR**

RIOO Digital Mortise Lock

**MRP: ₹ 59,999/-**

- Product Size : 368mm X 85mm
- Optional Color: Black, Silver, Golden
- Automatic lock / Relock features
- Password-Hide / Guest Pin Number feature
- Fingerprint Registration feature (Up to 100 users)
- Smart card Registration features (Up to 50 users)
- 40mm to 60mm Thick Wooden Door
- Use a Bluetooth Connection to Open and Close Door
- Video Door Phone (Optional)
- Remote Control (Optional)

**MRP: ₹ 57,000/-**



**RDPPL-1111**

RIOO Digital Push-Pull Lock



- Product Size : 240mm X 60mm
- Color : Bronze
- Password Registration feature (up to 100 users)
- Fingerprint Registration feature (up to 100 users)
- Smart card Registration feature (up to 100 users)
- Password-hide feature
- OTP feature
- Mobile APP
- Emergency Mechanical Key
- USB Emergency Power Supply
- 38mm to 50mm Thick Wooden Door
- Power Type : 4\*AAA batteries

**RDML-111 BL**

RIOO Digital Mortise Lock

**MRP: ₹ 20,999/-**



- Product Size : 408mm X 80mm
- Color : Black
- Password Registration feature (up to 150 users)
- Fingerprint Registration feature (up to 100 users)
- Smart card Registration feature (up to 150 users)
- Face Registration feature (up to 50 users)
- In-built Video Door Bell
- Remote Control Feature (Optional)
- Mobile APP
- Password-hide feature
- OTP feature
- Emergency Mechanical Key
- USB Emergency Power Supply
- 45mm to 60mm Thick Wooden Door
- Battery Capacity : 4200mAh

**RDML-555 FR**

RIOO Digital Mortise Lock

**MRP: ₹ 37,999/-**

- Product Size : 234.5mm X 75.5mm
- Automatic lock / Relock features
- Password-Hide feature
- Smart card Registration features (Up to 50 users)
- 35mm to 55mm Thick Wooden Door
- Emergency Mechanical Key
- Adjustable volume setting with Muting features
- External 9V Emergency Battery Terminal

**MRP: ₹ 28,000/-**



**RDML-1002**

RIOO Digital Mortise Lock



- Product Size : 173.4mm X 70.4mm
- Defect free, Strong Sturdy door lock
- Strong and Durable Body Components
- Automatic Lock and Relock
- Password Hide Feature
- RFID card Registration (Up to 50 sets)
- 10mm to 12mm Thick Glass door
- Support right open and left open

**MRP: ₹ 22,350/-**

**RDGL-1004**

RIOO Digital Glass Lock



- Product Size: 250mm x 60mm x 21mm.
- Material: Aluminium Alloy.
- Color: Black.
- Pin Number, RFID Card, Fingerprint Can Register Upto 300 users
- Applicable Door Thickness: 35mm to 55mm
- Mobile Bluetooth APP
- Power Type : 4\*AAA batteries

**MRP: ₹ 20,999/-**

### **RDML-6001-BL**

Fingerprint Smart Door Lock

- Product Size: 300mm x 68mm x 21mm
- Material: Aluminium Alloy cover
- Color: Black
- Pin Number, RFID Card, Fingerprint Can Register Upto 300 users
- Emergency mechanical Key
- Door Thickness: 35mm to 55mm
- Mobile Bluetooth APP
- Power Type : 4\*AA batteries

**MRP: ₹ 26,999/-**



### **RDML-6002-BL**

Fingerprint Smart Door Lock



- Product Size: 320mm x 40mm
- Material: Zinc Alloy cover
- Color: Black.
- Fingerprint Registration (150 users)
- Password Registration (150 users)
- RFID Card Registration (150 users)
- Door Thickness: 35mm to 55mm
- Mobile Bluetooth APP
- Power Type : 4\*AA batteries

**MRP: ₹ 21,500/-**

### **RDML-6003-BL**

Fingerprint Smart Door Lock

## SMART DOOR LOCK



- Product Size: 156mm x 59mm x 35mm
- Material: Aluminium Alloy
- Color: Black
- Password Registration (150 users)
- RFID Card Registration (100 users)
- Door Thickness: 35mm to 55mm
- Mobile Bluetooth APP
- Power Type : 4\*AA batteries

**MRP: ₹ 18,999/-**

### **RDRL-6004-BL**

Smart Door Lock

- Product Size: 156mm x 59mm x 35mm
- Material: Aluminium Alloy
- Color: Black
- Fingerprint Registration (100 users)
- Password Registration (150 users)
- RFID Card Registration (100 users)
- Door Thickness: 35mm to 55mm
- Mobile Bluetooth APP
- Power Type : 4\*AA batteries

**MRP: ₹ 20,999/-**



### **RDRL-6005-BL**

Fingerprint Smart Door Lock



- Product Size : 156mm X 59mm
- Double Sided Fingerprint Lock
- Product Size: 156mm x 59mm x 35mm
- Material: Aluminium Alloy
- Color: Black.
- Fingerprint Registration (100 users)
- Password Registration (150 users)
- RFID Card Registration (100 users)
- Door Thickness: 35mm to 55mm
- Mobile Bluetooth APP
- Power Type : 4\*AA batteries

**MRP: ₹ 22,999/-**

### **RDRL-6006-BL**

Fingerprint Smart Door Lock





- Product Size: 60mm Diameter
- Material: Zinc Alloy
- Color: Black
- Password Registration (Up to 150 users)
- RFID card Registration (Up to 200 users)
- Fingerprint Registration (Up to 120 users)
- Door Thickness: 35mm to 65mm
- Mobile Bluetooth APP
- Power Type : 4\*AA batteries

**MRP: ₹ 19,500/-**

### **RDML-6007-BL**

Fingerprint Smart Door Lock



## SMART DOOR LOCK



- Product Size : 195mm X 82mm
- Color : Black
- Material : Aluminum Alloy
- Password Registration feature (up to 150 users)
- Fingerprint Registration feature (up to 120 users)
- Smart card Registration feature (up to 200 users)
- Mobile Bluetooth APP
- Remote Control Feature (Optional)
- Password-hide feature
- USB Emergency Power Supply
- 8mm to 12mm Thick Glass Door
- Power Type : 4\*AA batteries

**MRP: ₹ 25,000/-**

### **RDGL-7004 BL**

Fingerprint Glass Door Lock



- Product Size : 232mm X 73mm X 23.5mm
- Color : Black
- Material : Aluminum Alloy
- Pin Number, RFID Card, Fingerprint can register upto 300 users
- Mobile Bluetooth APP
- OTP from Anywhere Outside
- Password-hide feature
- Emergency Mechanical Key
- USB Emergency Power Supply
- 38mm to 50mm Thick Wooden Door
- Power Type : 4\*AA batteries

**MRP: ₹ 16,999/-**



### **RDML-7001 BL**

Fingerprint Smart Door Lock

- Product Size : 142mm X 25mm
- Color : Black
- Material : Aluminum Alloy
- Password Registration feature (up to 40 users)
- Fingerprint Registration feature (up to 50 users)
- Mobile Bluetooth APP
- Password-hide feature
- Emergency Mechanical Key
- USB Emergency Power Supply
- 8mm to 12mm Thick Wooden Door
- 8mm Thick for Glass Door (with 45mm x 16mm Profile Door)
- Power Type : 14500/3.7V Lithium battery

**MRP: ₹ 22,999/-**



### **RDML-7005 BL**

Fingerprint Smart Door Lock



- Product Size : 195mm X 82mm
- Color : Black
- Material : Aluminum Alloy
- Password Registration feature (up to 150 users)
- Fingerprint Registration feature (up to 120 users)
- Smart card Registration feature (up to 200 users)
- Mobile Bluetooth APP
- Remote Control Feature (Optional)
- Password-hide feature
- USB Emergency Power Supply
- 30mm to 55mm Thick Wooden Door
- Power Type : 4\*AA batteries

**MRP: ₹ 25,000/-**

### **RDRL-7003 BL**

Fingerprint Smart Door Lock







# DIGITAL CABINET LOCK



**RDCL-1021-NEW**  
Fingerprint Cabinet Lock

- Product Size : 51.2mm X 51.2mm
- Material of lock body: ABS+Zinc Alloy
- Various working modes available (public mode, private mode, manual mode).
- Micro USB connector/3.5mm socket for emergency power supply.
- Capacitive fingerprint scanner, high sensitive, can store 100 fingerprints.



**MRP: ₹ 14,999/-**

- Application: Drawer, Cabinets Openable
- Type: Password Access
- Suitable Wooden Panel Thickness: 16-20mm
- PIN Number: 1 User
- User code: 1 to 8 Digits
- Emergency supply: Micro USB connector/3.5mm socket

**MRP: ₹ 4,999/-**



**RDCL-1025**  
Digital PIN Code Lock

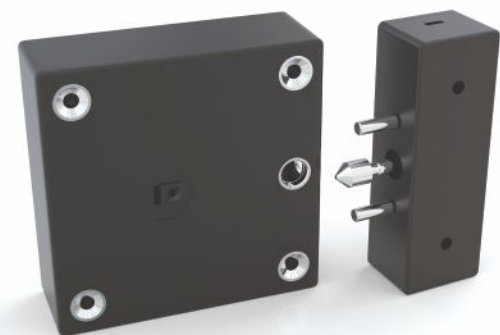


- Application: Drawer, Cabinets, Openable
- Type: RFID Card & Password Access
- Suitable Wooden Panel Thickness: 16-18mm
- PIN / RF card: (20 User RFID Card & One Password)
- Emergency supply: Micro USB connector/3.5mm socket

**MRP: ₹ 5,999/-**

**RDCL-1026**  
Digital RFID & PIN Code Lock





- Product Size : 80mm X 80mm
- Material: ABS+Zinc alloy
- Various working modes available (public mode private mode, manual mode)
- High frequency card: MF1, 13.56MHz

**MRP: ₹ 7,999/-**

### RDCL-1027

Digital RFID Card Invisible Lock

- Product Size : 65mm X 65mm
- Material of lock body: ABS
- Various working modes available (public mode, private mode, manual mode).
- Micro USB connector/3.5mm socket for emergency power supply.
- High frequency card: MF1, 13.56MHz
- Available: wrist band

**MRP: ₹ 9,999/-**



### RDCL-1028

Digital RFID Card Lock

- Product Size : 65mm X 65mm
- Material: ABS+Zinc alloy
- Various working modes available (public mode, private mode, manual mode).
- Master and User PIN Number
- Micro USB connector/3.5mm socket for emergency power supply.

**MRP: ₹ 9,999/-**



### RDCL-1029

Digital PIN Code Lock



- Product Size : 65mm X 65mm
- Material of lock body: ABS
- Various working modes available (public mode private mode, manual mode)
- Micro USB connector/3.5mm socket for emergency power supply
- Capacitive Fingerprint scanner, high sensitive can store 100 fingerprint

**MRP: ₹ 14,999/-**

### RDCL-1031

Fingerprint Cabinet Lock

- Product Size : 36mm X 36mm
- Material of lock body: ABS
- Various working modes available (public mode, private mode, manual mode).
- Master and User PIN Number
- Micro USB connector/3.5mm socket for emergency power supply.
- Capacitive Fingerprint scanner, high sensitive, can store 100 fingerprint.

**MRP: ₹ 14,999/-**



### RDCL-1032

Fingerprint Cabinet Lock



- Product Size : Ø64mm X 15.3mm
- Material of lock body : ABS+Zinc Alloy
- Various working modes available (public mode, private mode, manual mode)
- Micro USB connector 3.5mm socket for emergency power supply
- Capacitive fingerprint scanner, high sensitive, can store 50 fingerprints

**MRP: ₹ 14,999/-**

### RDCL-1033

Fingerprint Cabinet Lock



## DIGITAL CABINET LOCK



### RDCL-1034

Digital Fingerprint & PIN Code Lock



- Product Size : 55mm X 110mm
- Material of lock body : ABS
- Various working modes available (public mode private mode, manual mode)
- Master and User PIN Number
- Micro USB connector/3.5mm socket for emergency power supply
- Capacitive fingerprint scanner, high sensitive can store 50 fingerprints

**MRP: ₹ 14,999/-**

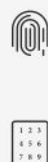
- Product Size : Ø48mm X 14mm
- Material of lock body : ABS
- Master and User PIN Number
- External battery box & adapter for power supply, etc.
- Micro USB connector/3.5mm socket for emergency power supply.
- Capacitive fingerprint scanner, high sensitive, can store 100 fingerprints.

**MRP: ₹ 14,999/-**



### RDCL-1035

Digital Fingerprint & PIN Code Lock



### RDCL-1039

Digital PIN Code Lock



- Product Size : 85mm X 70mm
- Various working modes available (public mode, private mode, manual mode).
- Suit for single/ double door glass cabinets.
- Suit for different door thickness: 5-9mm.
- 6-digit keypad and 4-8 digit password/code unlocking.
- High sensitive touchscreen keypad.
- Master and user Pin

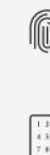
**MRP: ₹ 6,999/-**

## DIGITAL CABINET LOCK



### RDCL-1041

Fingerprint & PIN Code Lock



- Product Size : 114mm X 30mm
- Material : Panel: Zinc alloy, Lock Latch: Steel
- Suit for drawer, cabinet, wardrobe
- Suit for door thickness from 16-20mm
- High sensitive fingerprint reader, 100 Fingerprints unlocking
- 6-digit keypad and 1-10 digit password/code unlocking
- Emergency power supply

**MRP: ₹ 4,850/-**

- Product Size : Ø48mm X 24mm
- Material : Panel: Zinc alloy, Lock Latch: Steel
- Color : Black / White
- Suit for drawer, cabinet, wardrobe.
- Suit for door thickness from 16-20mm.
- High sensitive fingerprint reader, 20 Fingerprints unlocking.
- Bright circular light in three color for different signal.

**MRP: ₹ 4,950/-**



### RDCL-1042

Fingerprint Cabinet Lock



### RDCL-1043

Fingerprint Cabinet Lock



- Product Size : 32mm X 32mm
- Material : Panel: ABS, Lock Latch: Steel
- Color : Black / Silver / Gold
- Suitable for drawer, cabinet, wardrobe
- Suitable for door thickness from 16-20mm
- High sensitive fingerprint reader, 20 Fingerprints unlocking.
- LED light in three color for different signal
- Emergency power supply.

**MRP: ₹ 3,850/-**









- The technical presentation and dimension in illustration and drawing are non binding we reserve the right to make change to specifications at any time.
- We do not accept any responsibility for any errors which may occurs in the production of this catalogue all size in mm & inches.
- The printed color indicating the surface finishes are not 100% true but do provide a useful guide .
- Picture may show design which are different to be the standard scope of delivery.
- Product prices are subject to change without prior notice.
- Routine cleaning is essential, especially in environments that have elevated levels of atmospheric corrosion. Company has mechanism warranty not for Red spot or Rust, Proper care for your stainless steel door hardware will result in many years of durable use.



## **RED PLUS INTERIORS INDIA PRIVATE LIMITED**

C 8/9/10, Hind Saurashtra Industrial Estate,  
Andheri - Kurla Rd, Nr Mittal Ind. Estate,  
Marol Naka, Andheri (E), Mumbai-400059.

Mob.: +91 90907 09011

W: [www.rioo.in](http://www.rioo.in)

Mumbai | Agra | Ahmedabad | Bengaluru | Bhubaneswar | Chandigarh | Chennai | Delhi NCR  
Guwahati | Hyderabad | Jaipur | Kolkata | Lucknow | Pune | Surat | Raipur | Rajkot | Varanasi